



Rise Up Your Life

No. 1 Engineering in Thailand

Comfortable Efficient Parking





Meet KLA (No 1 Engineering in Thailand)

The revolutionary automatic parking system by KLA :

- Original Technology from EU Germany
- Premium quality with latest technology
- Owned 155 Patents with our Research and development
- European standard all components
- High Standard of Safety with High Level Control units
- Standard Design for Noise Reduction (Lowest Noise in Market)
- EV Charging support
- Maximum comfort with optimum space utilization for parking
- AI and Bigdata analytic to maintain zero shutdown time
- 3D Simulation Modeling and Analysis on design stage
- More than 30 years experience worldwide and development

30 YEARS
Continual Improvement
And Innovation

KLA

Innovative Engineering Firm

KLA Company Limited was established in 2011 and has been a diversifying and expanding company with extensive interest and expertise in the high-technology products and innovations.

KLA Company Limited has always improved its production process to stay ahead of the competitors and to guarantee customer satisfaction. Our superior manufacturing facilities and highly skilled staffs have served our many valued customers for over 25 years.



Our Product

Automated Parking System



Home Automation



Capital Register : 45 Million Bath
Founded in : 2011
Facilities : 2,000 Sqm Office in Bangkok
: 12,000 Sqm Factory in Chonburi
Engineer : 40

Management Team



Mr. Visesiti Arroonshap
President

“We are Innovative
Engineering Firm “



Mrs. Chidrada Suppasophone
Executive Vice President



Mr. Wasan Nakjaroenwari
Vice President



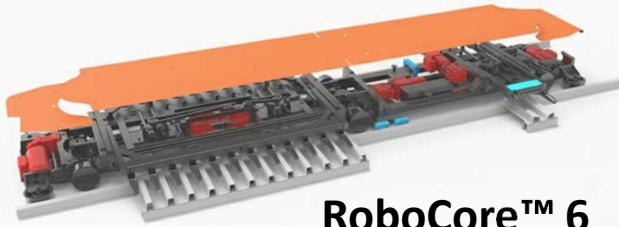
Mr. Attaporn Rattanapumma
Senior Vice President of
Engineering

“We are professional
Engineer Team . We
support the open and
respectful exchange of
ideas—from both within and
outside of the company .
And deliver consistently
great customer service . “

Invented in 1950's
In Germany

1) Robotic Automated Parking System

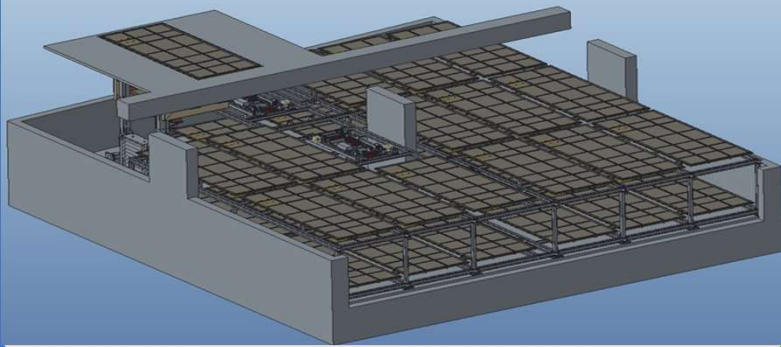
- 1 **RoboCore™** (Robotic Core Technology)
- 2 **BlockTech™** (Horizontal Puzzle)
- 3 **ConDeX™** (Conveyor-Based)
- 4 **AGV**



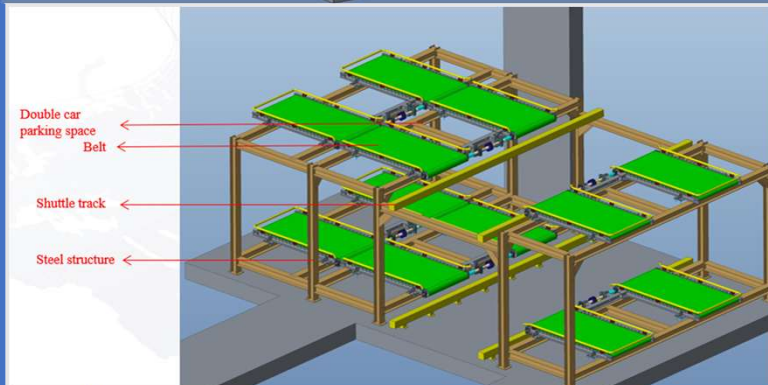
RoboCore™ 6



RoboCore™



BlockTech™



ConDeX™



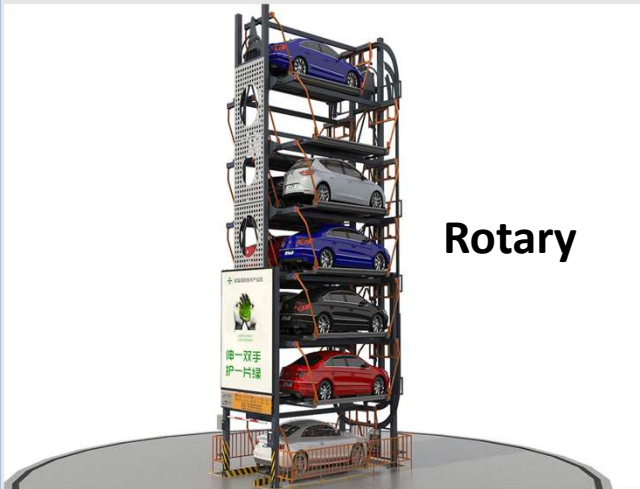
Invented in 1950's
In Germany

2) Palette Automated Parking System

1 Palette Type Solution
Tower
Palette with Elevator

2 Rotary
3 Puzzle
4 Double Stack

Puzzle



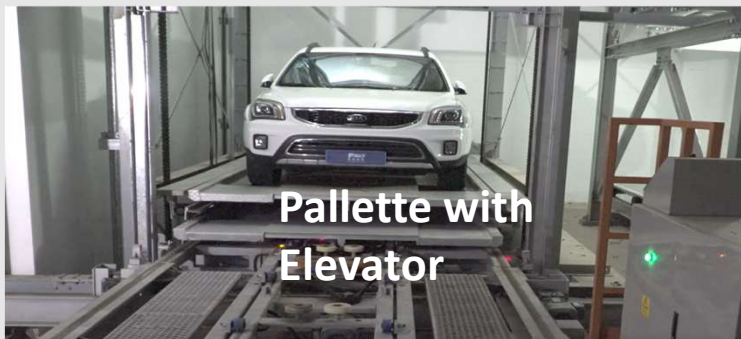
Rotary



Double Stack



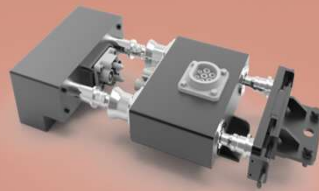
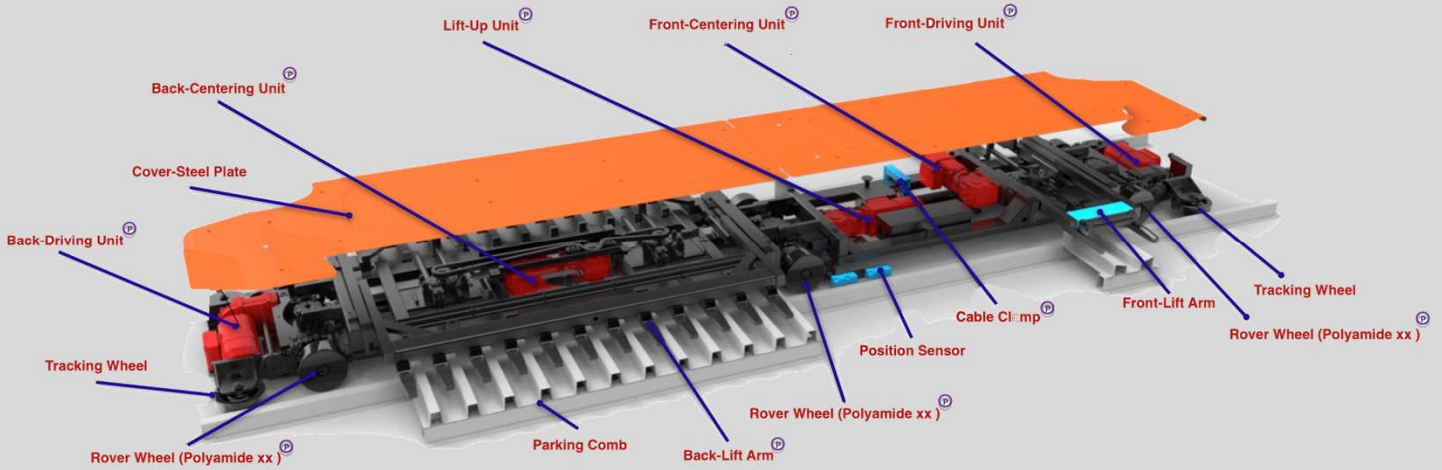
Tower



Palette with Elevator

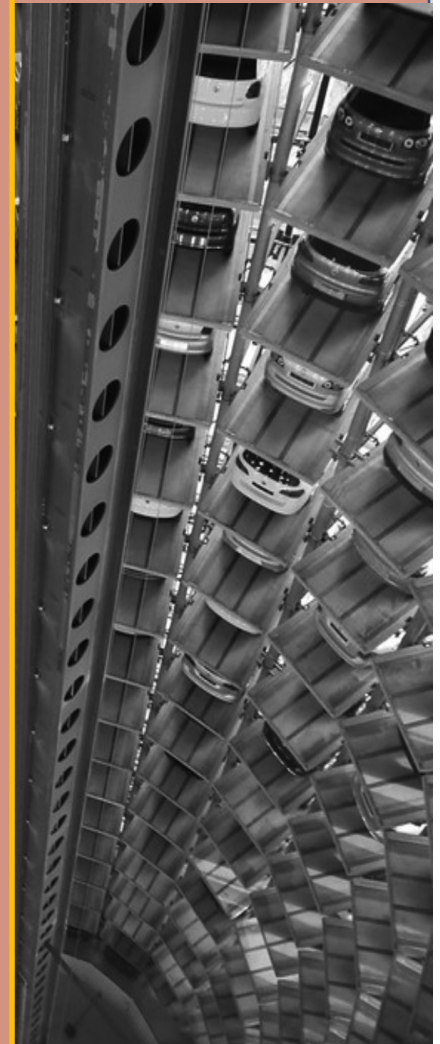


RoboCore™ (Robotic Core Technology)



30 years continual improvement and innovations ,We own almost 155 patents. More than 1000 + projects world wide.

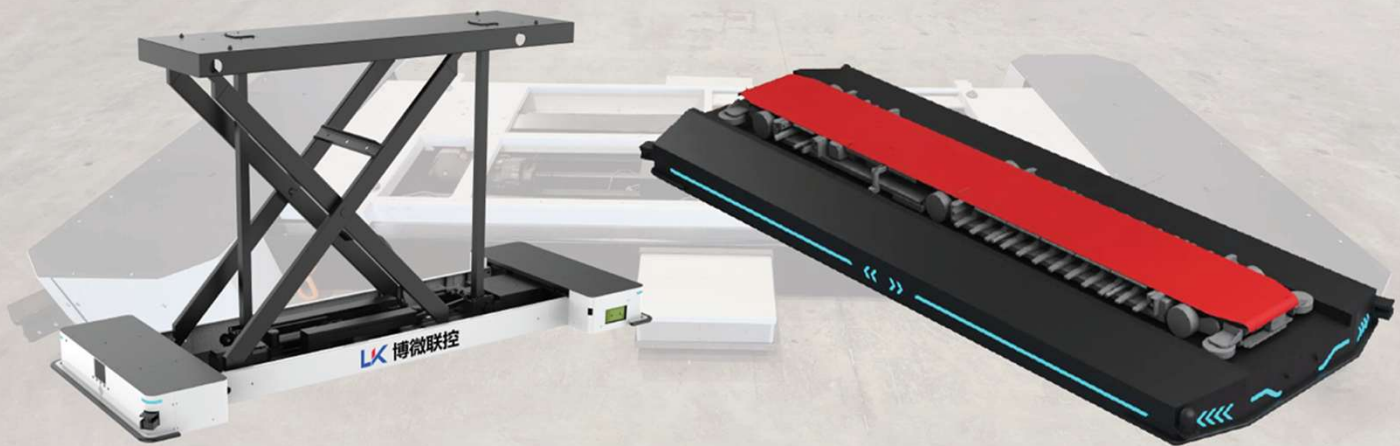
- Under umbrella of CETC (China stated own enterprise) we are continuously creating new product innovations
 - Wireless EV charging
 - New model of Robotic car carriage
 - AGV
 - Big Data Analytics and AI Platform for Parking solutions
 - Research and Development of Low Noise



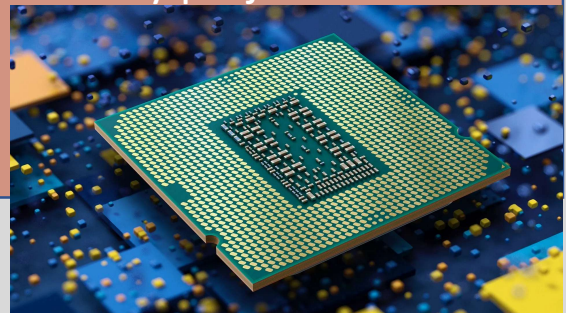
AGV

Lift AGV

Cluster AGV

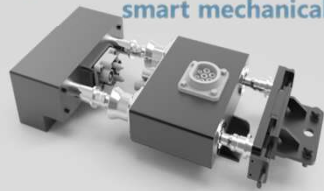


KLA AGV Robotic Parking System is an advanced automated parking solution powered by intelligent Automated Guided Vehicles (AGVs). Designed for high-density urban environments, the system autonomously transports vehicles from the entry point to parking spaces with precision and safety. Its flexible layout allows efficient use of space, making it ideal for complex building structures where conventional parking systems are limited. Engineered for reliability and scalability, KLA's AGV parking technology delivers smooth operation, reduced waiting time, and future-ready performance. By combining smart navigation, advanced control software, and robust engineering, KLA provides a premium parking experience that meets the demands of modern developments and smart city projects.





We focus on the development of the carriage and management control system of the high-end smart mechanical smart garage.



30 years continual improvement innovations ,We own almost 155 patents. More than 1000 + project world wide.

- Under umbrella of CETC (China state own enterprise) we are continually creating new product innovations
 - Wireless EV charging
 - New model of Robotic car carriage
 - AGV
 - Big Data Analytics and AI Platform for Parking solutions
 - Research and Development of Low Noise



Invented in 1950's
In Germany



2010 CETC bought licenses to start develop for China's Generation 1. It is implemented in the Smart City all around China.



2012 Established CETC established APS R&D Center for Smart City. As a generation 2, it was exported worldwide through the selected China Private company.



2014 CETC Launched Generation 3 and Register 56 Patents. It won the National Award for integrated Innovation

2019 KLA has undertaken a strategic partner with CETC. It successfully launched the Generation 4 APS which comprises AI and Big Data Analytics. It registered another 155 patents



Component of APS



We focus on the development of the carriage and management control system of the high-end smart mechanical smart garage.

1. Shuttle
2. VEGA Robotic Carriage
3. EV Charger
4. Car-Lift

With our AI and Bigdata Analytic technology and professional ME Team
We set up Command Center in our office and monitor 24 hours data link .
To assure

- Preventive Maintenance (Zero downtime)
- 24 hours on call service and on site request
- APS software upgrade matching to Project characteristic

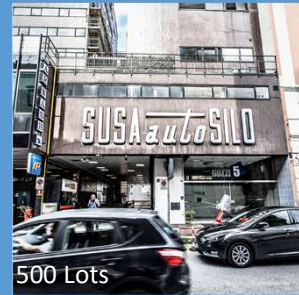




**Daman at DIFC
Dubai, UAE**



**The Muse
Miami**



**Autosilo Susa
Milan, Italy**



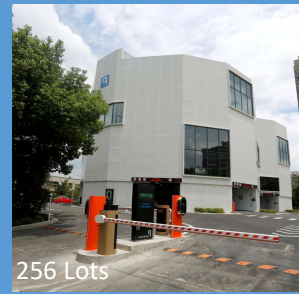
" **AS** a strategic Partner with CETC, our mission is to improve the flow of the urban life. KLA, as Thailand's technology leader in the Automated parking system industry, provides the premium products as well as solutions and values towards the buildings. By using our APS, problems of traffic flow in the buildings and irritation arising from them will disappear. In return, we will make people safer, more convenient and eventually happier."

"Engineering drive the Future"

[More Reference List](#)



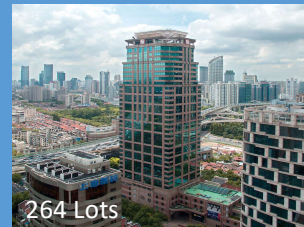
**Kamla Nagar
New Delhi, India**



**CETC Research Center
Hefei, Anhui**



**Iron Bank
Auckland, NZ**



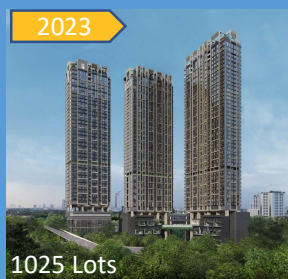
**Shanghai Central
Plaza**



**Vanke Community
Shenzhen, China**



**Hainan
International Plaza**



**Whizdom the
Forestias, BKK**

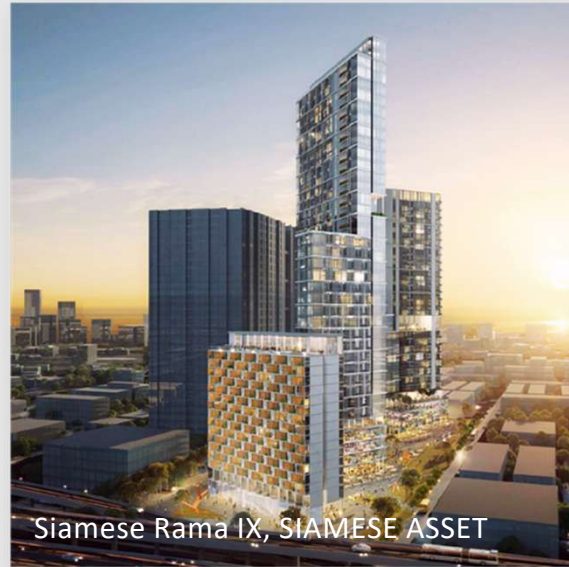


**Siamese Rama 9
BKK**

Our 3/15 Projects in Thailand



Whizdom The Forestias, MQDC



Siamese Rama IX, SIAMESE ASSET

Whizdom The Forestias

Whizdom The Forestias by MQDC is the new definition of vertical condo community living, using innovative design to meet all customers' daily needs. Situated in Bangna-Trad Road Km.7, it is the first pet-friendly condo project in Bangna that seeks to create a sense of well-being for all residents. The total project value is approximately 125,000 million Baht.

Siamese Rama IX

Siamese Rama IX by SIAMESE ASSET is the ultimate Mixed Use Project that comes completed with offices, co-working spaces, residences offering world class hotel standards. Located at the heart of Bangkok metropolitan, it is a branded residences that delivers on every demands in customers' life through various services in the international high standard. The total project value is approximately 10,000 million Baht.



Crown Residences Rama IV

Crown Residences by SE-Sathaporn Estate is the ultimate "Living Beyond Lumpini and Benchakitti Park"

The Crown Residences feature some of Bangkok's most exclusive and picturesque double-park frontage views. The building's horizontal shading and alternating balconies are designed to take advantage of expansive green vistas and fresh breezes from 850 rai of lush gardens at both Lumpini and Benchakitti Forest Park. Double-Park Frontage residences on the northside have large windows and balconies

Competitive Advantages

High Standard Safety

Low Noise by Predesign Stage

AI: Artificial Intelligence

Our APS is functioned by revolutionary robots with sensors and chips that help save waiting time, increase efficiency & guarantee safety.

Strategic alliance

KLA has undertaken a mutually beneficial partnership with the world-leading organizations namely European K.D. Fedderson and CETC.

Engineer-leading

KLA is an engineer-driven company. It can be ensured that our products and systems are especially selective to serve the premium quality while maintaining the maximum efficiency.

24 hrs.-After Sale Service

Our APS is 24 hrs. monitored by our after-sale service team. The customers can be trusted that the system will function efficiently and strictly.

Preventive Maintenance

By our robotic car carriage model using Big Data Analytics and AI platform, the company can guarantee 0% shutdown time and accidents.

Mobile App-supported

The team is developing the parking system compatible with the smart phone applications. The users can book or summon the cars via mobile apps.



Thanks you



VISESITI ARROONSHAP

วิเสสทิสิทธิ์ อรุณทรัพย์
President



(+66) 88-659-9956
visesiti@kla.co.th

99/279 RATCHADAPHISEK ROAD,
CHAN KASEM, CHATUCHAK,
BANGKOK 10900, THAILAND

VEGA